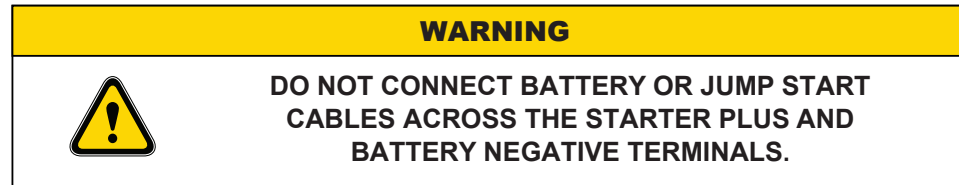


## 8. Troubleshooting

### 8.1 Jumpstarting

If a jump start is required, refer to Troubleshooting guides: Jumpstarting for correct jumpstarting procedure.



### 8.2 The first things to check if the SkelStart is not working as intended

Do an external visual check and look for damages. If no external damages are visible, start electrical test:

- Make sure that vehicle battery is connected to SkelStart Battery Plus and Battery Negative terminals.
- Hold the button down for 5 seconds and check if the module turns ON or OFF. SkelStart must be turned ON, meaning that after holding the button down for 5 seconds, the LED must be active for 5 seconds.
- If SkelStart is turned ON and vehicle battery is connected, SkelStart must start charging internal supercapacitor pack, which is indicated by blinking Status Indicator.
- Measure voltage between SkelStart Starter Plus and Battery Negative terminals. Volt-age should be rising and Status Indicator should be blinking until the SkelStart is fully charged.
- If voltage between SkelStart Starter Plus and Battery Negative terminals does not rise to specified SkelStart output voltage within 20 minutes (12V SkelStart) or 10 minutes (24V SkelStart), view the Troubleshooting Guides on pages 16-21.

### 8.3 Troubleshooting guides

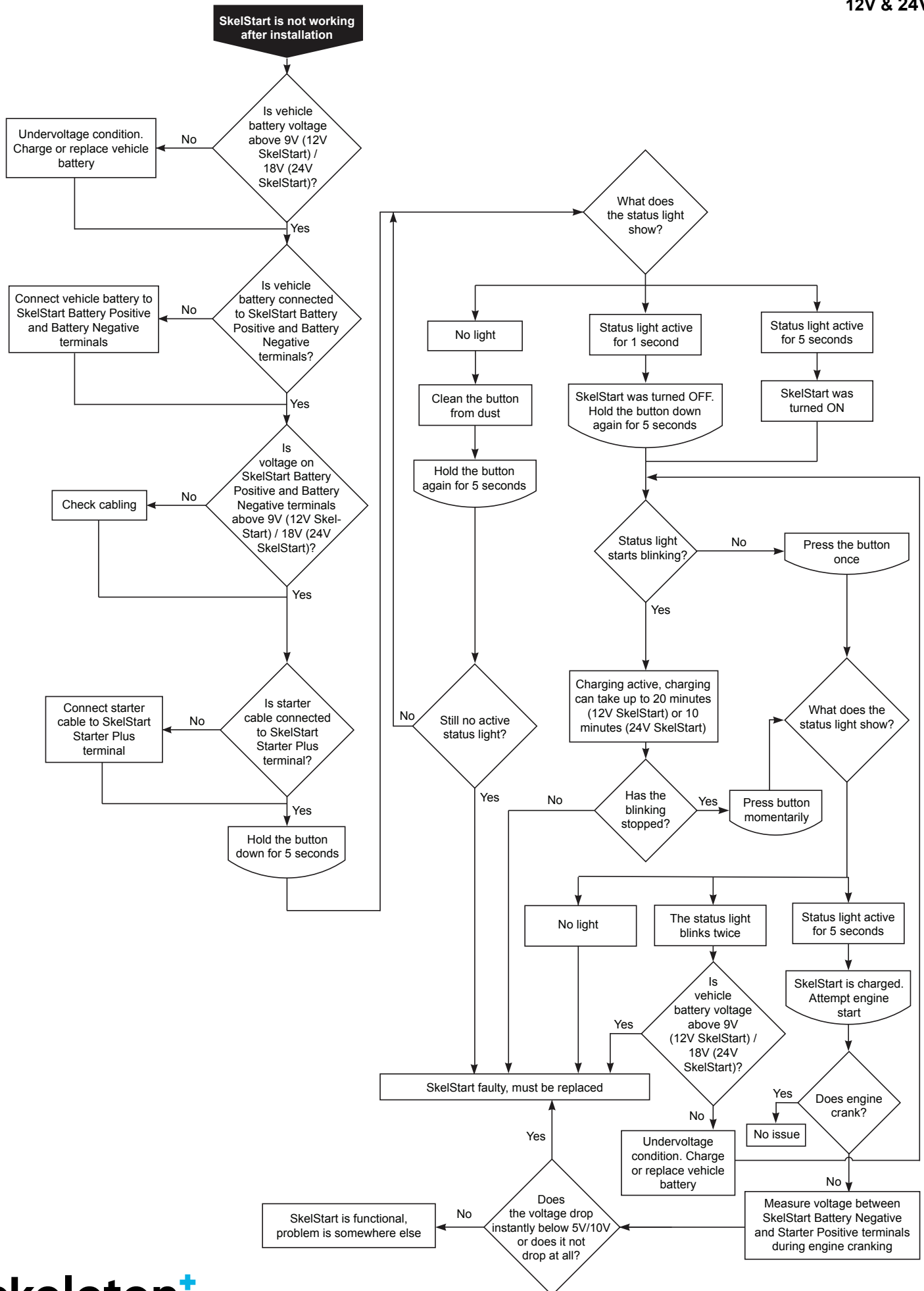
Please find troubleshooting guides after this page:

8.3.1 SkelStart is not working after installation 8.3.2 Jumpstarting

8.3.3 SkelStart stops working

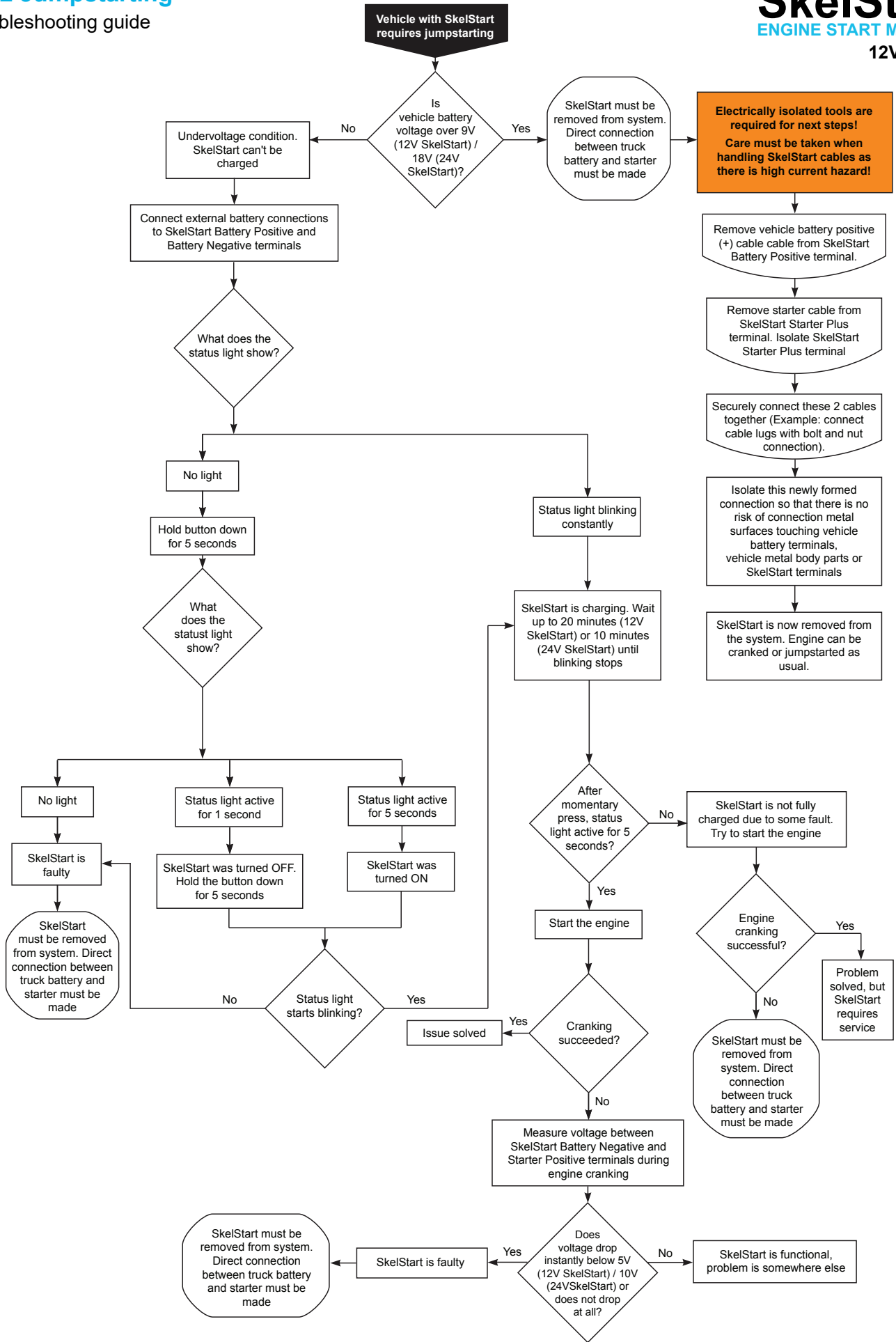
## 8.3.1 SkelStart is not working after installation

### Troubleshooting guide



## 8.3.2 Jumpstarting

### Troubleshooting guide



### 8.3.3 SkelStart stops working

#### Troubleshooting guide

