

# SKELSTART

ENGINE START MODULE

The most powerful starting module for engines up to 27L



- 1 No more jumpstarts**
- 2 Increases battery life**
- 3 One time investment (1,000,000 cycles)**
- 4 Works in extreme temperatures (-40°F +149°F)**



**C8**  
ENERGY

[12V] SKU 6730130  
[24V] SKU 6730107 & 6730129

# What is SkelStart?

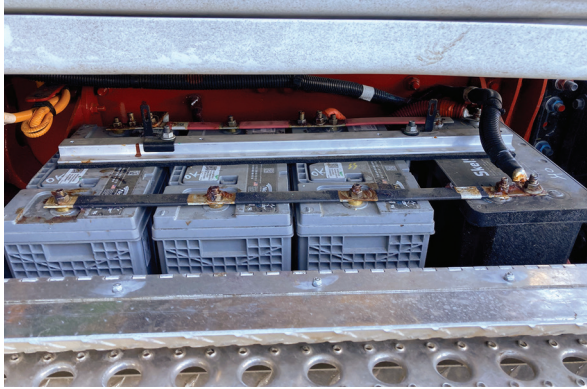
SkelStart is a supercapacitor engine start module. This storage technology is similar to batteries, but its strengths are very high power to crank your engine, 15+ year lifespan, and excellent reliability, even in extreme temperatures.



(M8) **6730130**



(M8) **6730107**  
(Post) **6730129**



## Easy and safe Installation

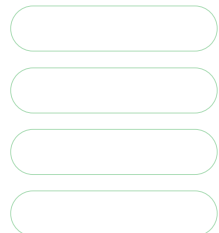
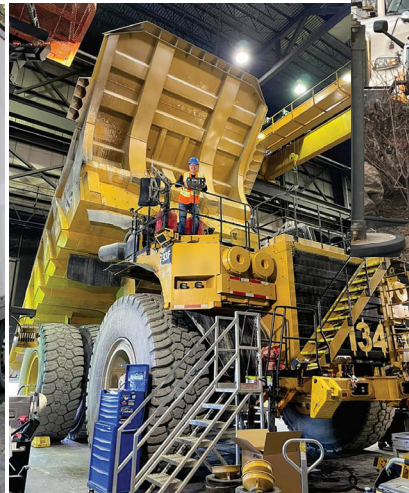
The SkelStart module goes between your battery and starter, making it the sole starting power for your engine. The batteries will keep powering hotel loads (lights, A/C, and so on).

Depending on your needs, the SkelStart can either replace one of your batteries, or be installed alongside your existing batteries.

## Sustainability

SkelStart is manufactured by Skeleton Technologies. This company's innovative technology and their committed actions in the sprint to net zero listed them in the Global Cleantech 100 hall of fame list.

Their exceptional engineering management systems as well as environmental policies and processes earned them ISO 9001:2015 and ISO 14001:2015 certifications.



# SKELSTART

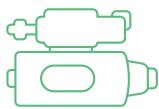
The most powerful starting module for engines up to 27L



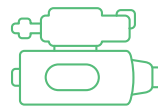
Jump start avoidance



Increase battery bank up to 2X



Isolates the starter from the battery bank – 3 poles



Extend starter life

Works at -40 °C/°F and up to +65°C / +149°F



1 million cycles – one-time investment



High power – 2000 CCA

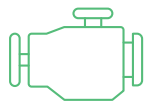


No Hazmat

Same size as Group 31 – a direct replacement



Full charge in 10/20 min (24/12V)



No need to idle engine to recharge



Only 9V needed to recharge

Vibration resistant (ISO 16750-3 Table 14)



8,5 kg / 18 lbs



Made in Germany



2 year warranty



**SkelStart 12V**



**SkelStart 24V**

Part #	(M8) 673080	(M8) 6730107 (Post) 673029
Cold Cranking Amps (CCA)*	2000A	1000A
Maximum Peak Current (1 sec current)**	3568A	2360A
Peak Power**	39kW	65,7kW
Charged full voltage	13,1V	26,2V
Energy	32Wh	32Wh
Rated Capacitance	1360F	340F
Individual Cell Capacitance	3400F	3400F
Charging current	20 (max.)A	20 (max.)A
Continuous input voltage range	9-16V	18-32V
Continuous input voltage range with specified charge time	11,5-16V	23-32V
Recharge time (from 0 V)	20min	10min
Operating temperature	-40 to +65°C -40 to +149°F	-40 to +65°C -40 to +149°F
Standby current draw	<10mA	<10mA
Dimensions	328 L x 171 P x 241 H mm 12,91 x 6,73 x 9,49 in	328 L x 171 P x 241 H mm 12,91 x 6,73 x 9,49 in
Weight	8,5kg 18,74lb	8,5kg 18,74lb
Threads and Nut size	M8 Metric	M8 Metric or Post

\* Based on Is ESR

\*\* The stated maximum peak current should not be exceeded during use. If the limit is to be exceeded by the customer, Skeleton must be consulted beforehand and give approval for the exceeded power load.



SkelStart is an exclusivity of C8 ENERGY  
[www.C8energy.com](http://www.C8energy.com)  
 1-855-722-5490  
 111 - 4710, rue St-Ambroise  
 Montreal QC H4C 2C7

